

CARNEY
BADLEY
SPELLMAN

Melvin N. Sorensen

LAW OFFICES
A PROFESSIONAL SERVICE CORPORATION

701 FIFTH AVENUE, SUITE 3600
SEATTLE, WA 98104-7010
FAX (206) 467-8215
TEL (206) 622-8020
DIRECT LINE (206) 607-4152

Email: sorensen@carneylaw.com

August 18, 2008

FILED

AUG 18 2008

Hearings Unit OIC
Patricia D Petersen
Chief Hearing Officer

Ms. Wendy Galloway
Hearings Unit
Washington Office of the Insurance Commissioner
5000 Capitol Blvd.
PO Box 40255
Olympia, WA 98504-0255

Re: Liberty Mutual organization charts

Dear Ms. Galloway,

Attached for your review are legible copies of organization charts which are provided pursuant to Item II, Page 4 of the Order on First Prehearing Conference that was filed on August 14 by OIC Chief Hearing Officer Patricia Petersen. Please do not hesitate to contact me with respect to this matter.

Sincerely,

CARNEY BADLEY SPELLMAN, P.S.



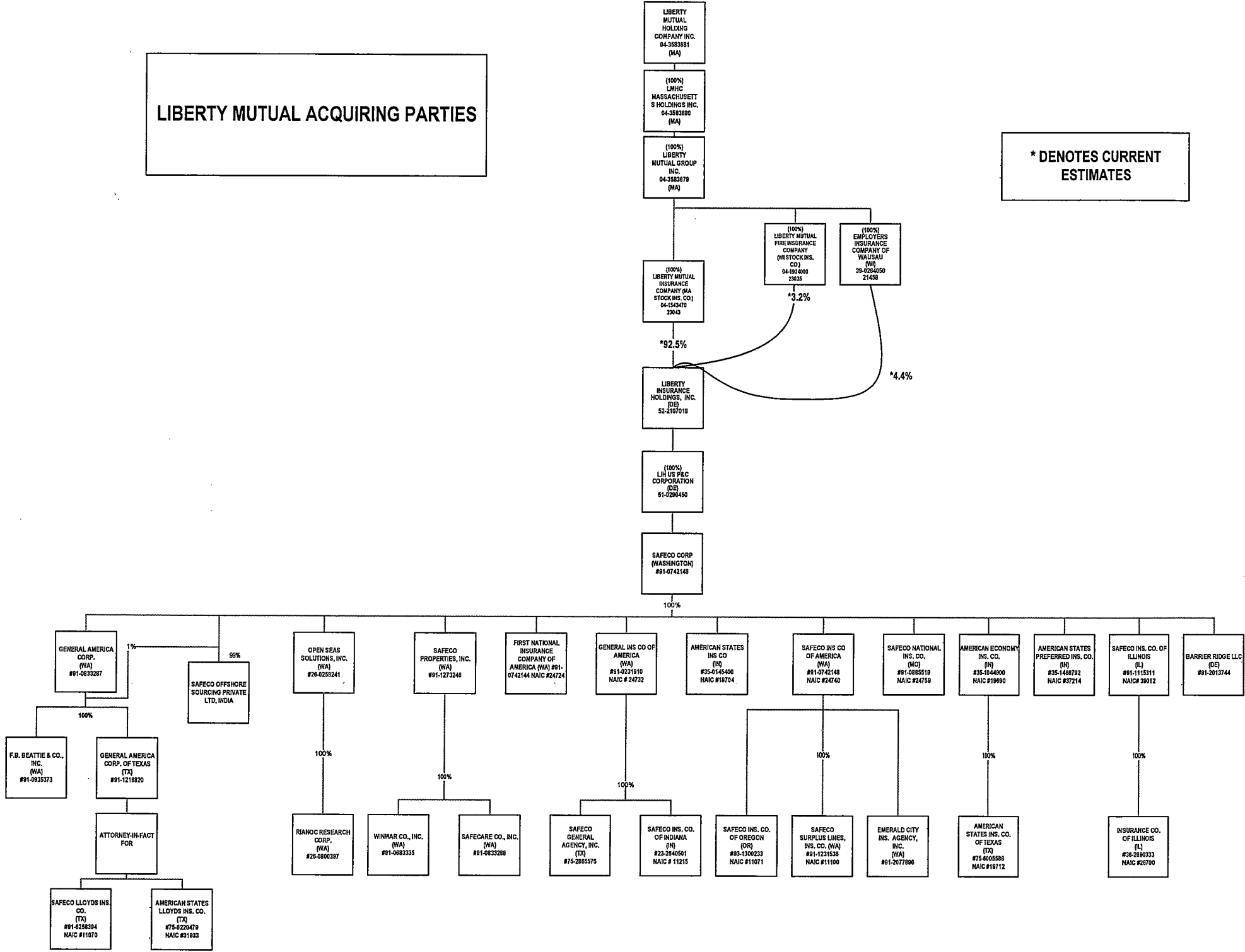
Melvin N. Sorensen

MNS:jc

Enclosure

LIBERTY MUTUAL ACQUIRING PARTIES

* DENOTES CURRENT ESTIMATES



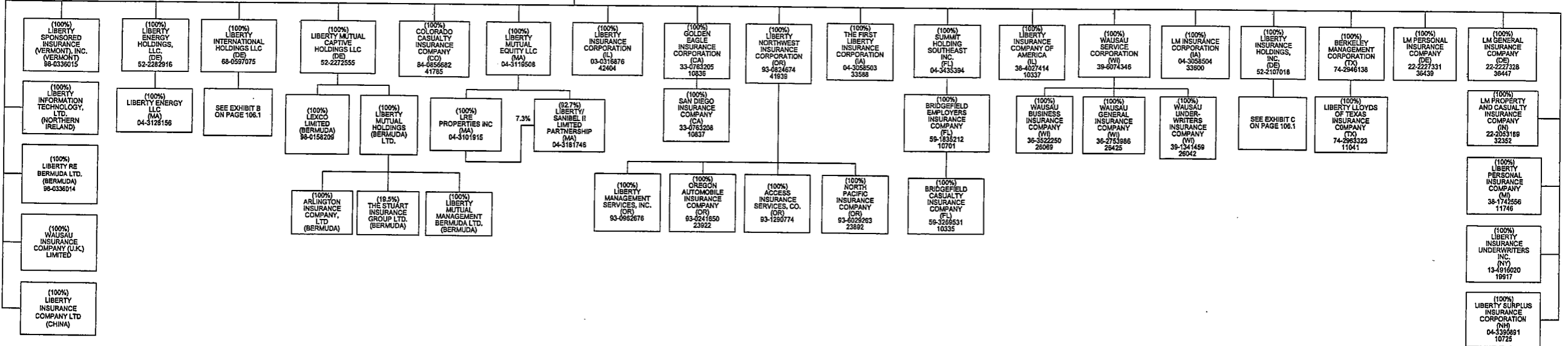
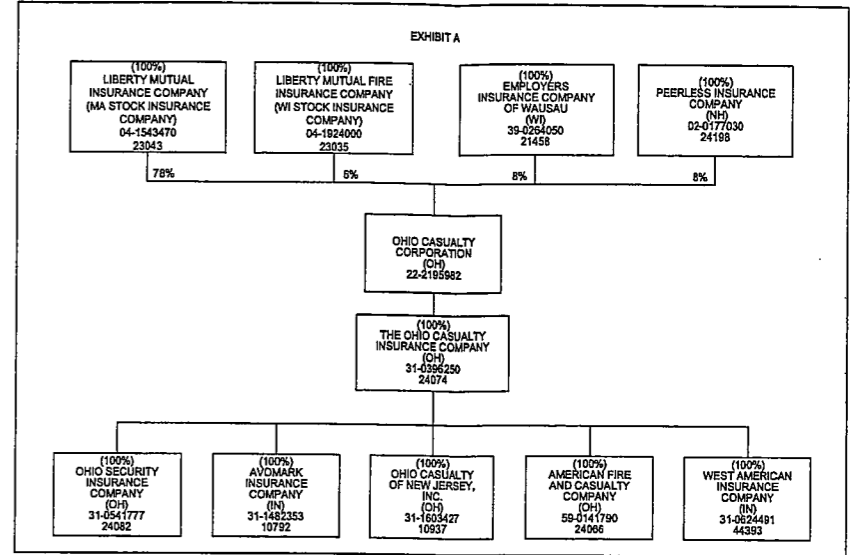
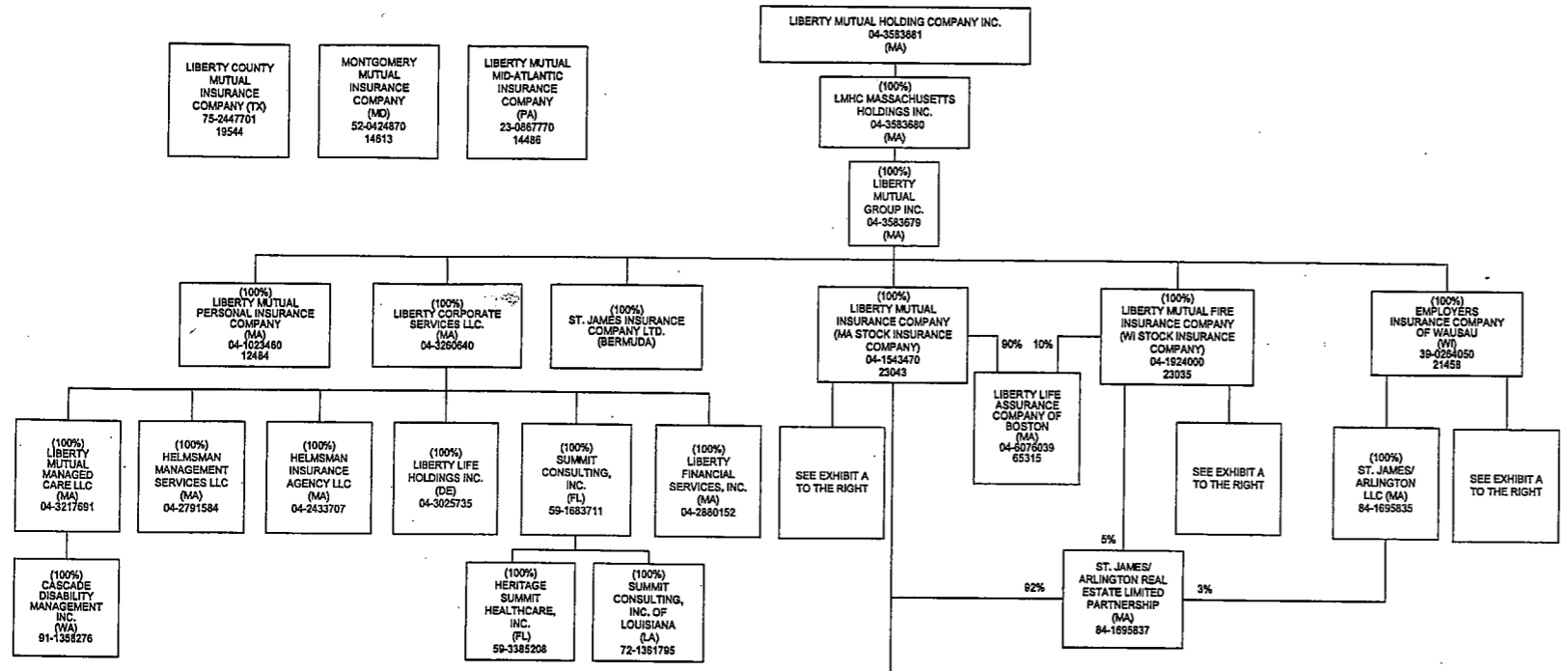


Exhibit B

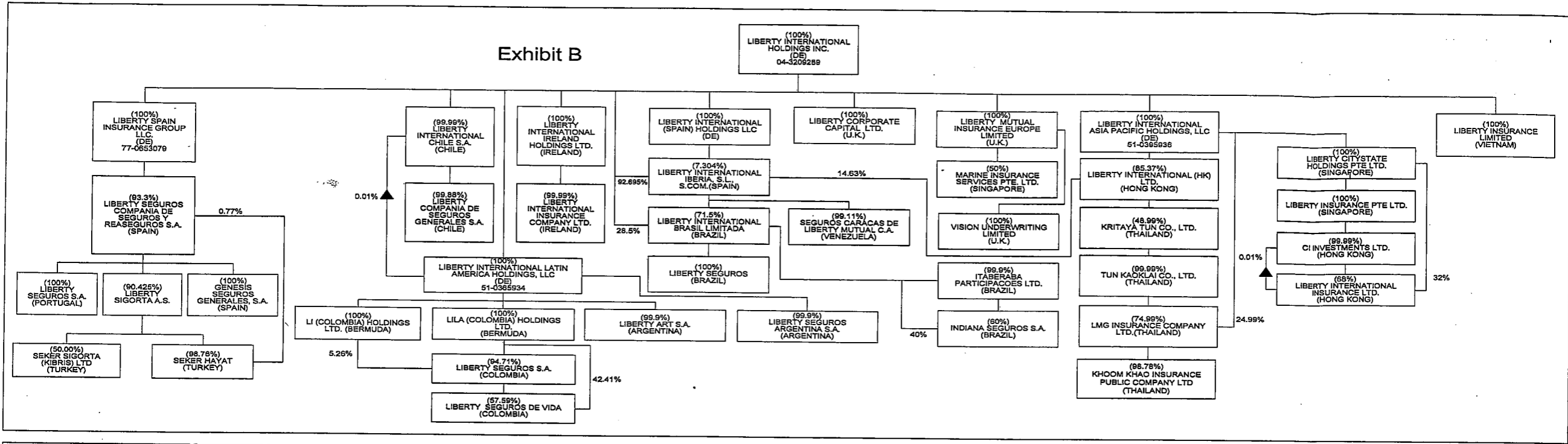


Exhibit C

